



INFORMATION DISPLAY TECHNOLOGY INC.  
**ULTURA CUSTOM CASEWORK**



**REAL SOLUTIONS FOR REAL LIFE PROBLEMS**





### **REAL SOLUTIONS. . .**

For forty years, the name Greensteel has been synonymous with quality, custom-made information display systems. Today, Greensteel is a division of Information Display Technology Inc.

What is not as well known is that the same measure of quality is found in Information Display Technology's Ultura line of custom casework.

Whether you are designing or updating a lab, I.D.T.'s Ultura Custom Casework Division can create the lab you want—exactly the way you want it.

Manufactured to meet the most demanding standards, Ultura Custom Casework has provided solutions for schools, hospitals, corporate, institutional and research laboratories throughout the United States.

### **. . . REAL LIFE PROBLEMS**

In terms of cost per square foot, a laboratory is one of the most valuable pieces of real estate in any location. That is why it is important to work with a manufacturer that can efficiently use all of the available space.

Ultura Custom labs are designed to be as practical as they are attractive. Using materials that are virtually maintenance





free means lab personnel can spend more time concentrating on working in the lab — not on the lab.

Ultura Custom Casework includes all of the elements you need to turn your "ideal lab" into your real lab—from step saving ideas to quality manufacturing through complete installation.

## PICTURE YOUR LAB BEFORE IT IS INSTALLED

Working with the professional designers of I.D.T., you are able to visualize your completed lab—in full 3-D—before a single piece is constructed. It is all possible through the use of our computer-assisted design capabilities. Comprehensive lab drawings allow modifications to be made in the design stage when changes are easier—and less expensive.

## INSTALLATION THAT IS THOROUGH AND EFFICIENT

An additional benefit to choosing Ultura, Custom Casework is that our labs are installed by experienced, thorough professionals. They know our systems inside and out—so your lab is installed right, and installed faster than you might imagine.

In the end, custom design assistance assures final installation without any surprises—just the full realization of your approved plans.

For quality installation you can count on, I.D.T.'s Ultura line has it all.







INFORMATION DISPLAY TECHNOLOGY INC.

## ULTURA CUSTOM CASEWORK



### **INDUSTRIAL/RESEARCH AND DEVELOPMENT**

#### **WHEN YOUR LAB MEANS BUSINESS**

##### **ULTURA MAKES GOOD BUSINESS SENSE**

Today's industrial labs face special challenges. Busy personnel are working harder to maintain high levels of productivity — even when faced with shrinking resources.

Ultura Custom labs take advantage of every square foot of expensive lab space—and maximize every dollar of your capital budget.

No matter how busy, an Ultura Custom lab can help improve the efficiency of your operation and the working environment for lab personnel.

Since your lab is critical to your success, your business can count on the quality of an Ultura Custom lab.





## HEALTHCARE

### SERVING YOUR LAB NEEDS

#### TO HELP YOU SERVE YOUR PATIENTS

Never has more attention been focused on the costs of health care. At the same time, health care professionals cannot cut corners which might impact patient care. Therefore it is increasingly important to get the most from every capital expenditure.

Ultura Custom labs are designed to serve both your commitment to quality patient care and your budgetary needs.

Step-saving designs and exceptional space utilization provide busy lab personnel the efficient lab they need to concentrate on patient care requirements.



## EDUCATIONAL

### NO MATTER HOW TOUGH THE USE

#### ULTURA CUSTOM IS TOUGHER

Whether the setting is for elementary schoolchildren or for university students, few labs face harder every-day use than educational labs.

Ultura Custom labs are designed and built to stand up to the toughest punishment they can hand out.

The Ultura Custom approach provides the lab you need—from high school science courses to post-graduate research.

With educational dollars being stretched further and further each year, choosing an Ultura Custom lab makes your lab budget go further—without altering your laboratory design.



MEMBER  
**SEFA**  
Scientific  
Equipment &  
Furniture  
Association





# INFORMATION DISPLAY TECHNOLOGY INC.

## ULTURA CUSTOM CASEWORK

### INSIDE AND OUT . . .

#### ULTURA CUSTOM LABS ARE BUILT TO LAST

Whether you prefer metal casework, wood or plastic laminate, I.D.T. is a complete source for all your casework requirements.

Whichever you choose, you can also select finishing details for your new lab such as recessed or applied drawer/door pulls, pull boards and locks.



#### METAL

For the ultimate in tough, resilient labs, I.D.T. offers a wide range of metal lab options.

All metal items can be furnished in painted steel or, if your environment is severe, stainless steel. You can also choose textured steel doors and drawer fronts to minimize the impact of fingerprints and reduce glare.



#### WOOD

If you prefer the rich, natural look of wood, Ultura Custom labs have what you're looking for.

From a selection of stains, to high pressure laminate fronts, to your choice in hardware, your completed lab gives you a one-of-a-kind design and a one-of-a-kind look.





### PLASTIC LAMINATE

Attractive and easy to care for, plastic laminate offers a wide variety of aesthetic choices *plus* cost efficient construction.

For additional efficiency, Ultura plastic laminate casework is built on the 32mm system which allows for the use of standardized, interchangeable hardware and component parts.



### MILLWORK

While the majority of your lab will be cabinets and countertops, your facility may have additional requirements for specialized pieces.

Ultura Custom Casework offers the option of ordering custom-designed items to compliment your lab furnishings.

Whether for support areas (such as reception counters, nurses stations and conference rooms) or simply to match other elements of the lab, Ultura Custom millwork can be manufactured to form any desired shape.

Whatever your design, I.D.T.'s craftsmen have the experience and the skill to carry out the details of your creation.

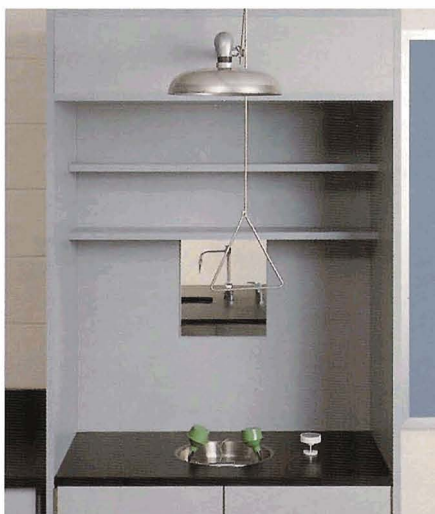




### TO SAFETY . . .

Equally as important is the safety of lab personnel. We offer eye-wash stations, showers and other items to make your lab as safe as it is attractive.

An especially important safety consideration in many labs is the FUMEHOOD. Ultura Custom can incorporate the necessary fumehoods; bench-top, walk-in, distillation, modified or custom built. We even offer special-purpose hoods meeting OSHA requirements for such substances as perchloric acid or radioisotopes. Ultura Fumehoods are designed to work with your HVAC system. You can choose the control functions you need such as variable volume, bypass/constant volume or auxiliary air.



### TO EVERYTHING IN BETWEEN

An Ultura Custom lab gives you more than just a choice of cabinets. I.D.T. can furnish you with everything you need to complete your lab including:

- Service Features
- Sink Basins
- Chairs/Stools
- Service Columns
- And more.

I.D.T. will complete the installation with the necessary service enclosures for piping, filler panels, and cove molding.

Whatever you choose, you can be certain your new Ultura Custom lab will stand up to years of hard use and still be as practical and efficient as the day it was first installed.



### FROM PRACTICAL WORKTOPS . . .

One of the most important choices you'll make is the right countertop for your lab. With an Ultura Custom Lab you can pick the countertop that meets your needs from several popular and durable materials:

- ① Stainless Steel
- ② Black Epoxy Resin
- ③ White Epoxy Resin
- ④ Impregnated Sandstone
- ⑤ CORIAN®
- ⑥ Resistop™
- ⑦ Acid Resistant Laminate
- ⑧ High Pressure Laminate.



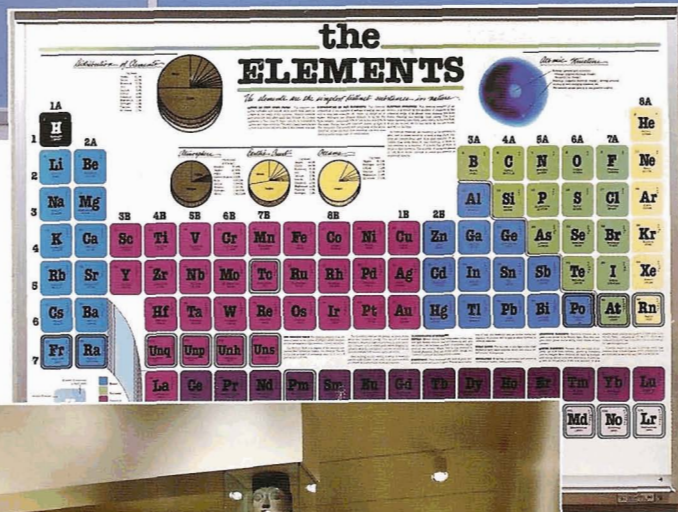
## VISUAL DISPLAY PRODUCTS FROM I.D.T

For labs, offices, classrooms or conference rooms, Greensteel products from I.D.T. offer a wide range of options to help you improve communications and efficiency.

### CHALKBOARDS/DRY MARKER BOARDS/ TACKBOARDS

Whether in an education or industrial setting, Greensteel Visual Display Products offer the quality, durability, long-life and flexibility to serve your needs.

- Offering stationary, movable and motor-operated chalkboards, the Greensteel line of unbreakable, maintenance-free writing surfaces are guaranteed for 50 years.
- If chalkdust might cause a problem, Greensteel Dry-Marker boards are high-gloss and stain-resistant.
- Tackboards offer flexibility in posting policies, regulations and more — in colors to enhance any decor.



### ENDURA BOARDS

With our unique photographic process, any graphic (from a map to a floor plan to staff lists) can be permanently imprinted on a write-on board. Special water-soluble marking pens allow you to indicate marketing territories, inventory planning or staff assignments. You can even create a permanent, virtually indestructible list of procedures or reference information.

### DISPLAY CASES

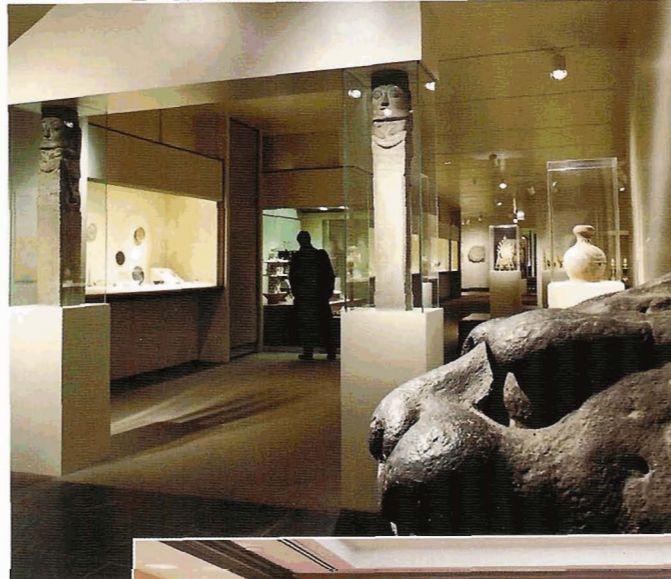
Most organizations have items which illustrate their ideals, accomplishments, products or interests. With Greensteel display cases, you have the flexibility to design a custom-made display case as unique as its contents.

### CONFERENCE ROOMS AND MEDIA CENTERS

When a single visual display product doesn't fit the bill, I.D.T. can help you decide what your conference room could include. Based on your requirements, Greensteel can design a complete conference room with a multi-functional media center.

In addition to the right combination of products and the right configuration, we can even provide acoustically rated wall treatments, draperies, carpeting and furniture.

From a single unit to a full-scale video/teleconferencing center, decide what you want your center to do and Greensteel will provide a custom-designed solution to meet your communication needs.





## THE I.D.T. DIFFERENCE

While it may be tempting to think of us for the systems we manufacture, the people of I.D.T. see ourselves in another way — as problem-solvers.

I.D.T. will:

- Meet with you to determine your needs
- Furnish preliminary plans
- Assist in budget development
- Prepare a final quotation
- Supply 3-D plans for review
- Complete CAD drawings for approval
- Manufacture a single-unit or a complete lab
- Complete installation of every component

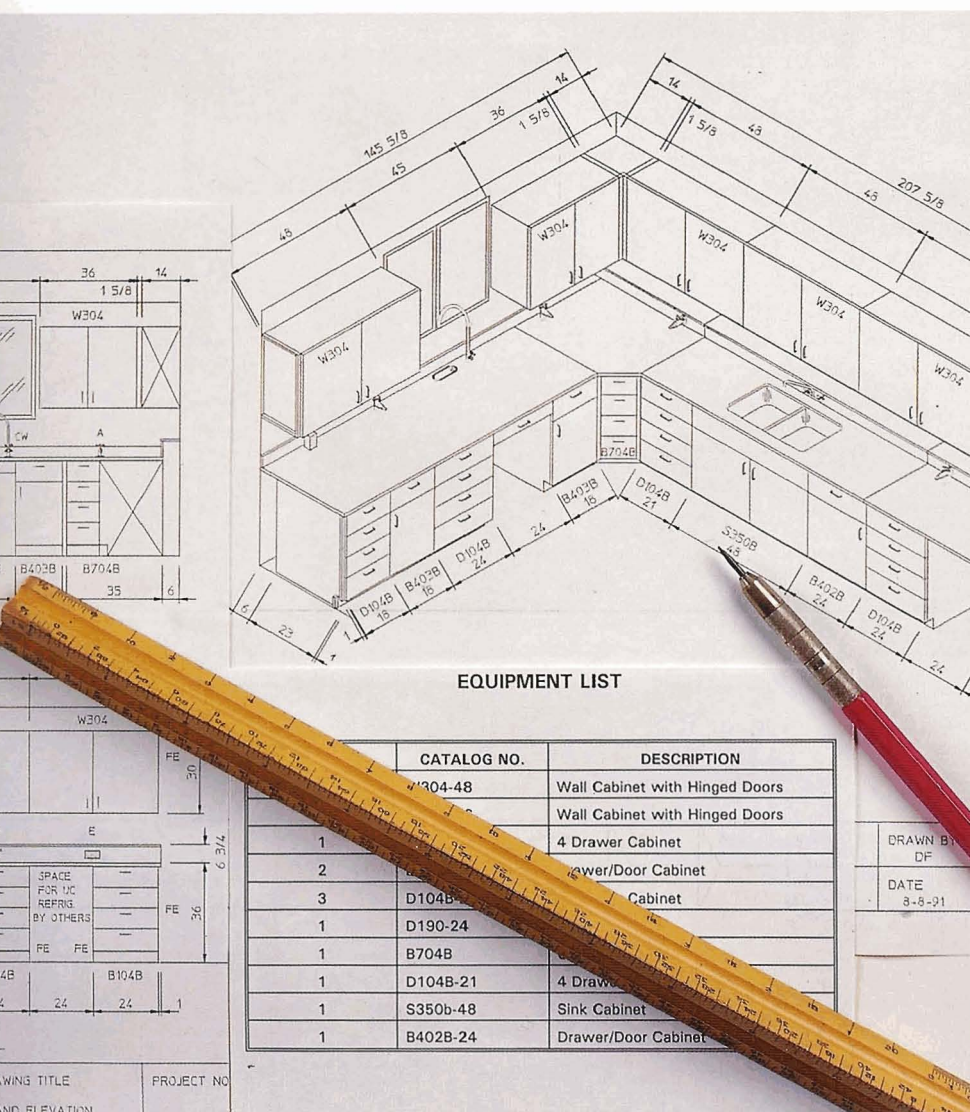
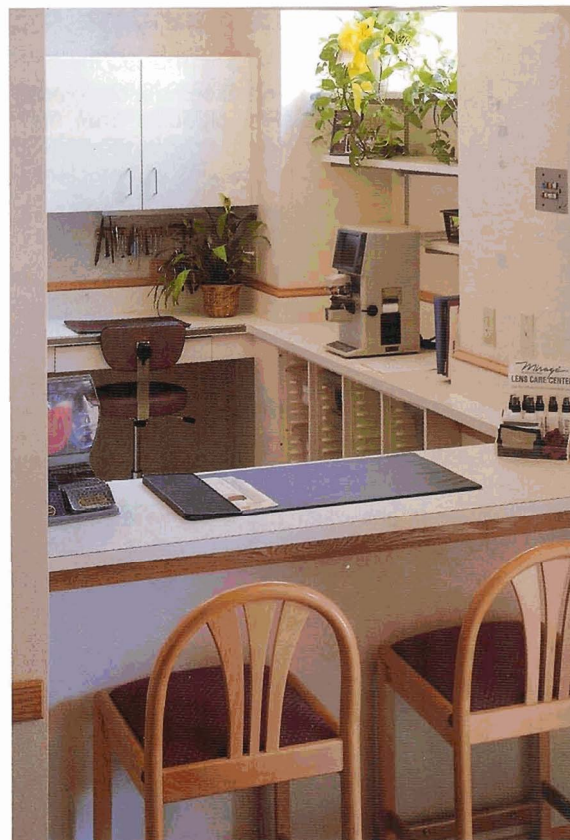
In addition to working with you to create an entirely new lab, I.D.T. is also available for

consultation on updating or expanding an existing lab.

Call us for more information or to arrange a consultation about your casework requirements. Whatever your design needs, you can count on enjoying products and service encompassing the same quality on which we built our reputation.

With I.D.T., you supply the problem, we supply ideas, assistance and on-going involvement until your lab is complete.

Information Display Technology—  
Ultura Custom Casework  
Greensteel Visual Display Products











**INFORMATION DISPLAY TECHNOLOGY INC.**  
**ULTURA CUSTOM CASEWORK**



**INFORMATION DISPLAY TECHNOLOGY, INC.**  
**INDUSTRIAL CASEWORK DIVISION**

29 Laing Avenue  
Dixonville, PA 15734-0335  
Phone (412) 254-4321  
FAX 412-254-2885  
800-766-4204